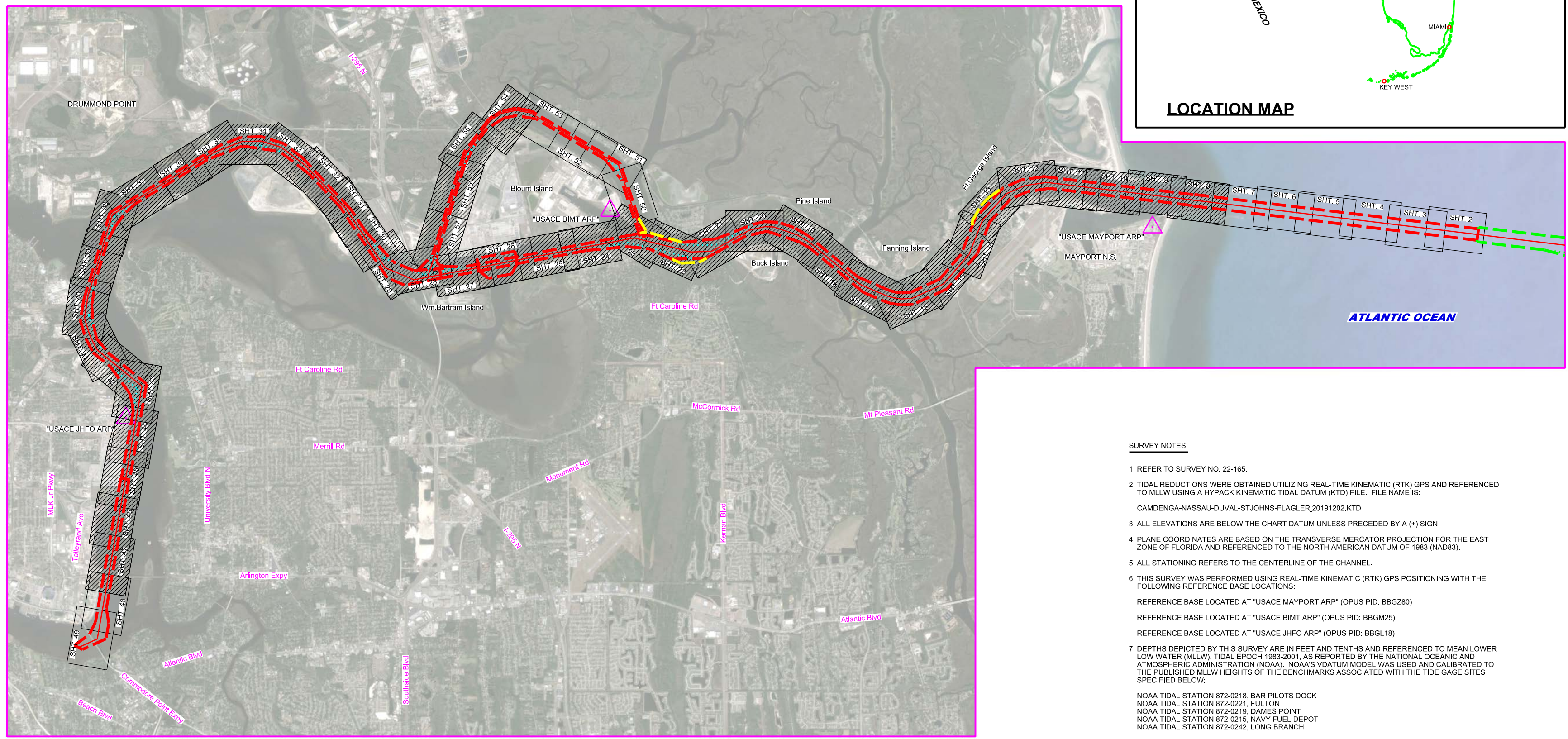
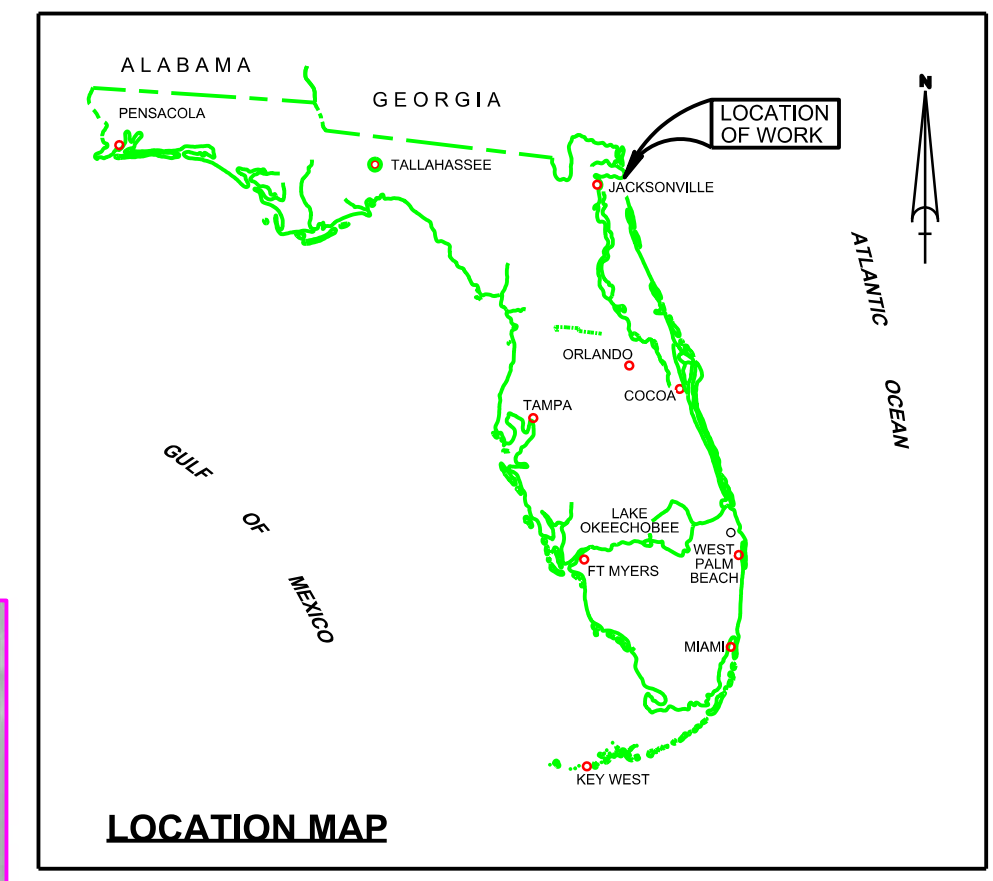


JACKSONVILLE HARBOR, FLORIDA 4th QUARTER EXAM SURVEY FY22 30, 34, 38, 47 & 49-FOOT PROJECT



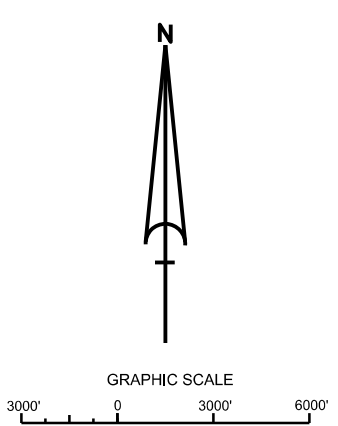
SURVEY NOTES:

- REFER TO SURVEY NO. 22-165.
- TIDAL REDUCTIONS WERE OBTAINED UTILIZING REAL-TIME KINEMATIC (RTK) GPS AND REFERENCED TO MLLW USING A HYPACK KINEMATIC TIDAL DATUM (KTD) FILE. FILE NAME IS: CAMDENGA-NASSAU-DUVAL-STJOHNS-FLAGLER 20191202.KTD
- ALL ELEVATIONS ARE BELOW THE CHART DATUM UNLESS PRECEDED BY A (+) SIGN.
- PLANE COORDINATES ARE BASED ON THE TRANSVERSE MERCATOR PROJECTION FOR THE EAST ZONE OF FLORIDA AND REFERENCED TO THE NORTH AMERICAN DATUM OF 1983 (NAD83).
- ALL STATIONING REFERS TO THE CENTERLINE OF THE CHANNEL.
- THIS SURVEY WAS PERFORMED USING REAL-TIME KINEMATIC (RTK) GPS POSITIONING WITH THE FOLLOWING REFERENCE BASE LOCATIONS:
 REFERENCE BASE LOCATED AT "USACE MAYPORT ARP" (OPUS PID: BBG280)
 REFERENCE BASE LOCATED AT "USACE BMT ARP" (OPUS PID: BBGM25)
 REFERENCE BASE LOCATED AT "USACE JHFO ARP" (OPUS PID: BBGL18)
- DEPTHS DEPICTED BY THIS SURVEY ARE IN FEET AND TENTHS AND REFERENCED TO MEAN LOWER LOW WATER (MLLW), TIDAL EPOCH 1983-2001, AS REPORTED BY THE NATIONAL OCEANIC AND ATMOSPHERIC ADMINISTRATION (NOAA). NOAA'S VDATUM MODEL WAS USED AND CALIBRATED TO THE PUBLISHED MLLW HEIGHTS OF THE BENCHMARKS ASSOCIATED WITH THE TIDE GAGE SITES SPECIFIED BELOW:
 NOAA TIDAL STATION 872-0218, BAR PILOTS DOCK
 NOAA TIDAL STATION 872-0221, FULTON
 NOAA TIDAL STATION 872-0219, DAMES POINT
 NOAA TIDAL STATION 872-0215, NAVY FUEL DEPOT
 NOAA TIDAL STATION 872-0242, LONG BRANCH
- VERTICAL MEASUREMENTS WERE MADE USING A R2 SONIC MODEL 2024 MULTI-BEAM SYSTEM (240 KHZ), A TELEDYNE E20 DUAL-FREQUENCY (28/200 KHZ) SINGLE-BEAM TRANSDUCER, A RESON T50P MULTI-BEAM SYSTEM (300 KHZ), AND AN EDGETECH 6205 MULTI-BEAM / SIDESCAN OPERATING AT 550 KHZ. ALL SOUNDINGS ARE SHOWN IN HIGH FREQUENCY EXCEPT FOR UPPER TERMINAL CHANNEL STATIONS 0+00 - 70+00 WHICH ARE IN LOW FREQUENCY (28 KHZ).

VESSEL	DATE OF SURVEY	AREA SURVEYED
SB-WELLS	03 AUG 2022	UPPER TERMINAL CHANNEL STA 0+00 - 70+00
SB-44	08 AUG 2022	CUT 17 THRU 40
SB-44	09 AUG 2022	CUTS 41 THRU 42 STA 35+00
SB-36	15 AUG 2022	CUTS 54 THRU 55
SB-36	16 AUG 2022	CUT-42 STA 35+00 - 130+00
SB-44	16 AUG 2022	CUTS 43 THRU 44
SB-36	17 AUG 2022	CUT-42, CUT-F AND CUT-G
SB-44	17 AUG 2022	CUTS 45 THRU 49
SB-36	18 AUG 2022	CUTS 50 THRU 51
SB-44	18 AUG 2022	CUTS 52 THRU 53
SB-36	22 AUG 2022	CUTS 4 THRU 8
SB-36	23 AUG 2022	CUTS 9 THRU 16
SV-SALZER	23 AUG 2022	BAR CUT-3
SV-SALZER	24 AUG 2022	BAR CUT-3
SV-SALZER	15 SEP 2022	UPPER TERMINAL CHANNEL STA 72+00 - 130+00

- AIDS TO NAVIGATION WERE LOCATED FOR THIS SURVEY.
- THE INFORMATION DEPICTED ON THIS MAP REPRESENTS THE RESULTS OF SURVEYS MADE ON THE DATES INDICATED ABOVE AND CAN ONLY BE CONSIDERED AS INDICATING THE GENERAL CONDITIONS AT THAT TIME. THIS CHART IS SOLELY FOR THE DISTRIBUTION OF AVAILABLE DEPTHS AT THE TIME OF SURVEY.
- SURVEY ACCURACY STANDARDS, QUALITY CONTROL, AND QUALITY ASSURANCE REQUIREMENTS WERE FOLLOWED DURING THIS SURVEY IN ACCORDANCE WITH USACE EM 1110-2-1003, HYDROGRAPHIC SURVEYING, 30 NOV 2013.

LEGEND	
	MONUMENT
	LIGHTED BEACON
	GREEN DAYBEACON
	RED DAYBEACON
	RED LIGHTED BUOY
	GREEN LIGHTED BUOY
	CAN BUOY
	NUN BUOY
	TIDE STAFF
	PROJECT DEPTH



US Army Corps of Engineers
Jacksonville District

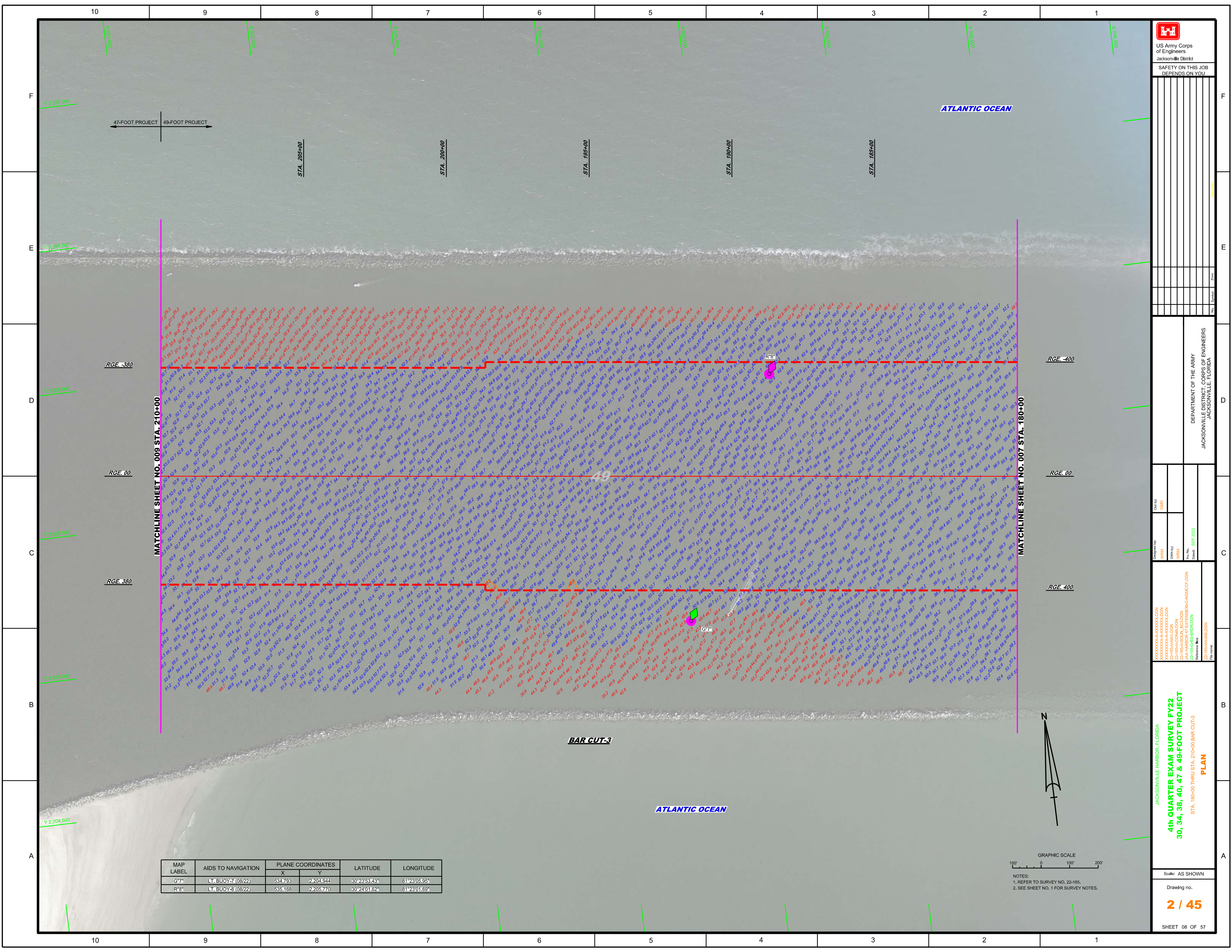
SAFETY ON THIS JOB
DEPENDS ON YOU

DEPARTMENT OF THE ARMY
JACKSONVILLE DISTRICT, CORPS OF ENGINEERS
JACKSONVILLE, FLORIDA

4th QUARTER EXAM SURVEY FY22
30, 34, 38, 40, 47 & 49-FOOT PROJECT
INDEX, LOCATION AND VICINITY MAP

Scale: AS SHOWN
Drawing no.
1 / 45

SHEET 01 OF 57



US Army Corps of Engineers

 Jacksonville District

 SAFETY ON THIS JOB

 DEPENDS ON YOU

DEPARTMENT OF THE ARMY

 JACKSONVILLE DISTRICT, CORPS OF ENGINEERS

 JACKSONVILLE, FLORIDA

Call by: GHR

 Designed by: WRM

 Drawn by: WRM

 Date: SEP 2022

JACKSONVILLE HARBOR, FLORIDA

4th QUARTER EXAM SURVEY FY22

30, 34, 38, 40, 47 & 49-FOOT PROJECT

 STA. 180+00 THRU STA. 210+00 BAR CUT-3

PLAN

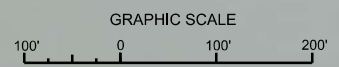
Scale: AS SHOWN

 Drawing no.

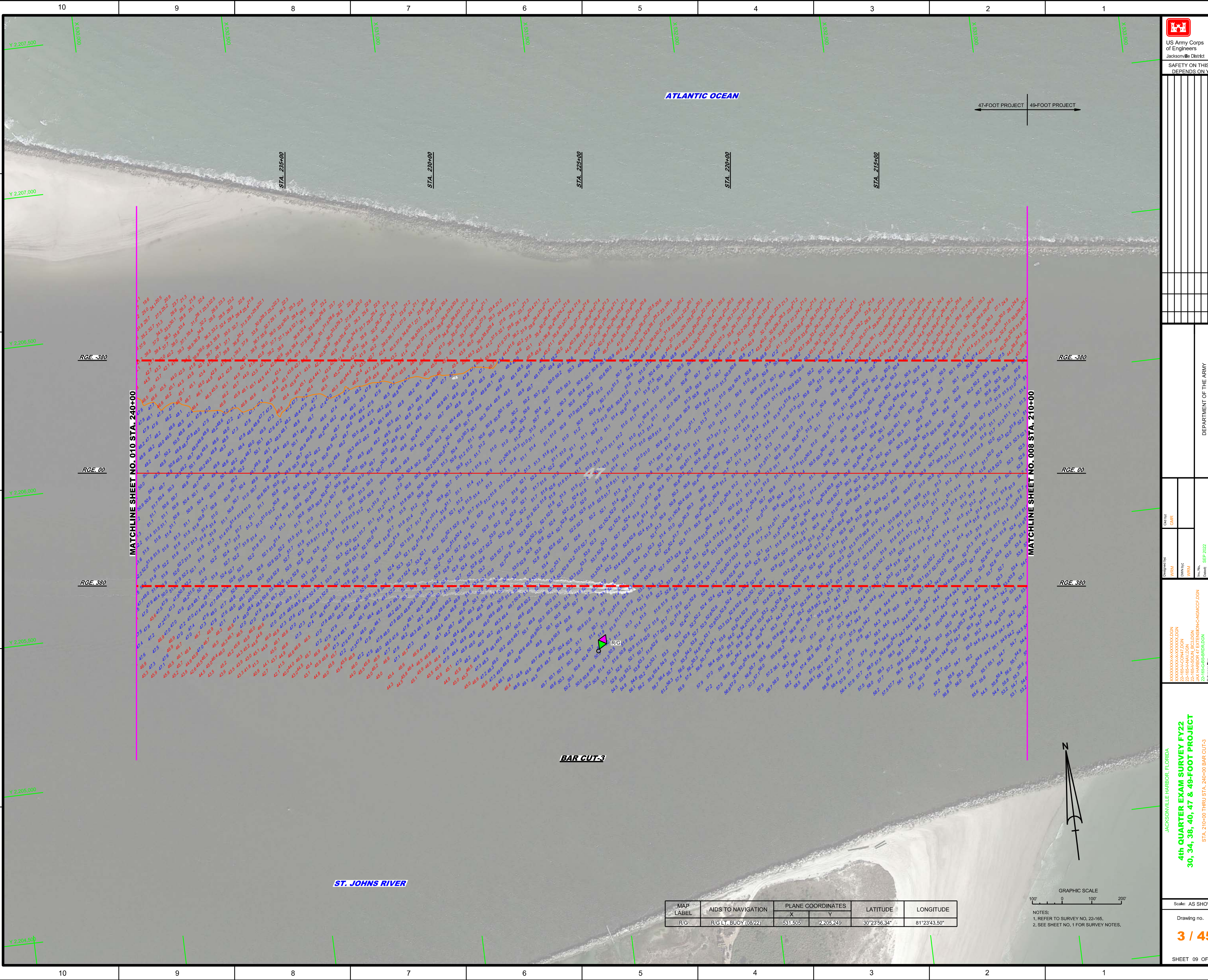
2 / 45

 SHEET 08 OF 57

MAP LABEL	AIDS TO NAVIGATION	PLANE COORDINATES		LATITUDE	LONGITUDE
		X	Y		
G7*	LT BUOY-7 (0822)	534,793	2,204,944	30°23'53.43"	81°23'05.95"
R8*	LT BUOY-8 (0822)	535,168	2,205,770	30°24'01.62"	81°23'01.69"



NOTES:
 1. REFER TO SURVEY NO. 22-165.
 2. SEE SHEET NO. 1 FOR SURVEY NOTES.



ATLANTIC OCEAN

ST. JOHNS RIVER

BAR CUT-3

47-FOOT PROJECT 49-FOOT PROJECT

STA. 235+00

STA. 230+00

STA. 225+00

STA. 220+00

STA. 215+00

RGE -380

RGE -380

RGE 00


RGE 00

RGE 380

RGE 380

MATCHLINE SHEET NO. 010 STA. 240+00

MATCHLINE SHEET NO. 008 STA. 210+00



US Army Corps of Engineers
Jacksonville District

SAFETY ON THIS JOB
DEPENDS ON YOU

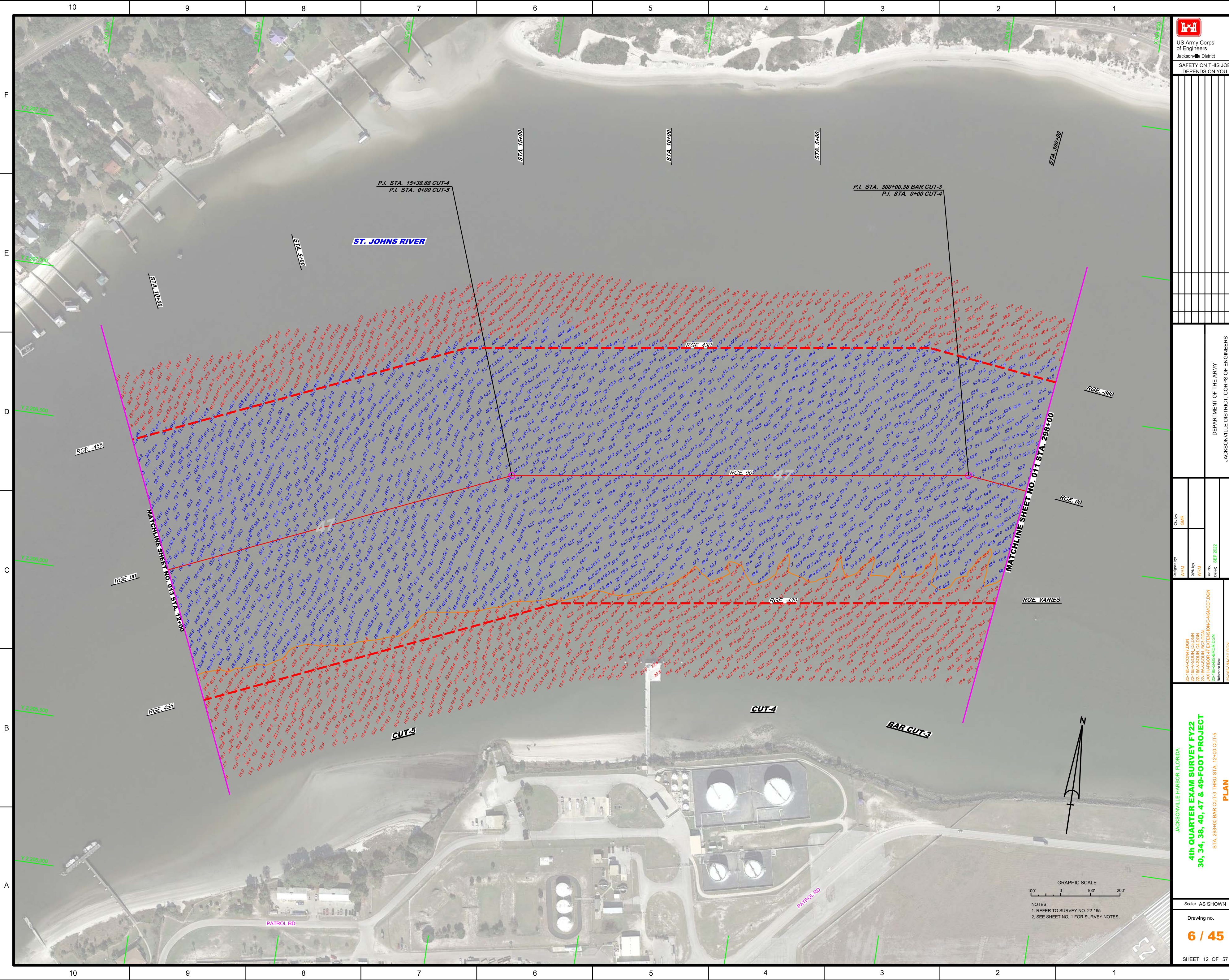
Drawn by: WRM	Check by: GHR	Designated by: WRM	Date: SEP 2022
Drawn by: WRM	Check by: GHR	Designated by: WRM	Date: SEP 2022

JACKSONVILLE HARBOR, FLORIDA
4th QUARTER EXAM SURVEY FY22
30, 34, 38, 40, 47 & 49-FOOT PROJECT
 STA. 210+00 THRU STA. 240+00 BAR CUT-3
PLAN

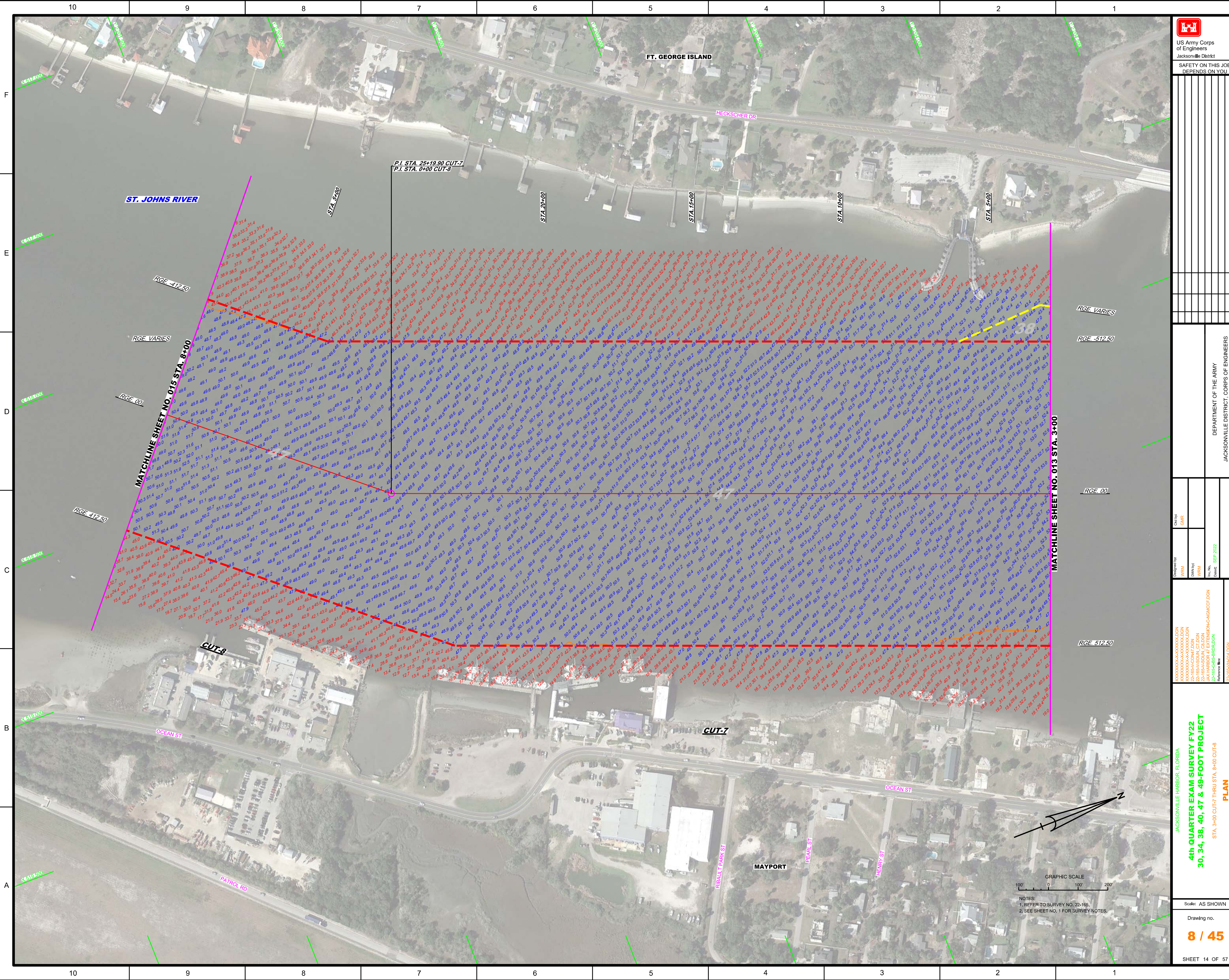
Scale: AS SHOWN
 Drawing no.
3 / 45
 SHEET 09 OF 57

MAP LABEL	AIDS TO NAVIGATION	PLANE COORDINATES		LATITUDE	LONGITUDE
		X	Y		
R/G	R/G LT. BUOY (08/22)	531.505	2,205.249	30°23'56.34"	81°23'43.50"

GRAPHIC SCALE
 100' 0 100' 200'
 NOTES:
 1. REFER TO SURVEY NO. 22-165.
 2. SEE SHEET NO. 1 FOR SURVEY NOTES.



GRAPHIC SCALE
100' 0 100' 200'
NOTES:
1. REFER TO SURVEY NO. 22-165.
2. SEE SHEET NO. 1 FOR SURVEY NOTES.



US Army Corps of Engineers
Jacksonville District

SAFETY ON THIS JOB
DEPENDS ON YOU

DESIGNED BY	WRM	CHECKED BY	WRM
DRAWN BY	WRM	DATE	SEP 2022

DEPARTMENT OF THE ARMY
JACKSONVILLE DISTRICT, CORPS OF ENGINEERS
JACKSONVILLE, FLORIDA

JACKSONVILLE HARBOR, FLORIDA

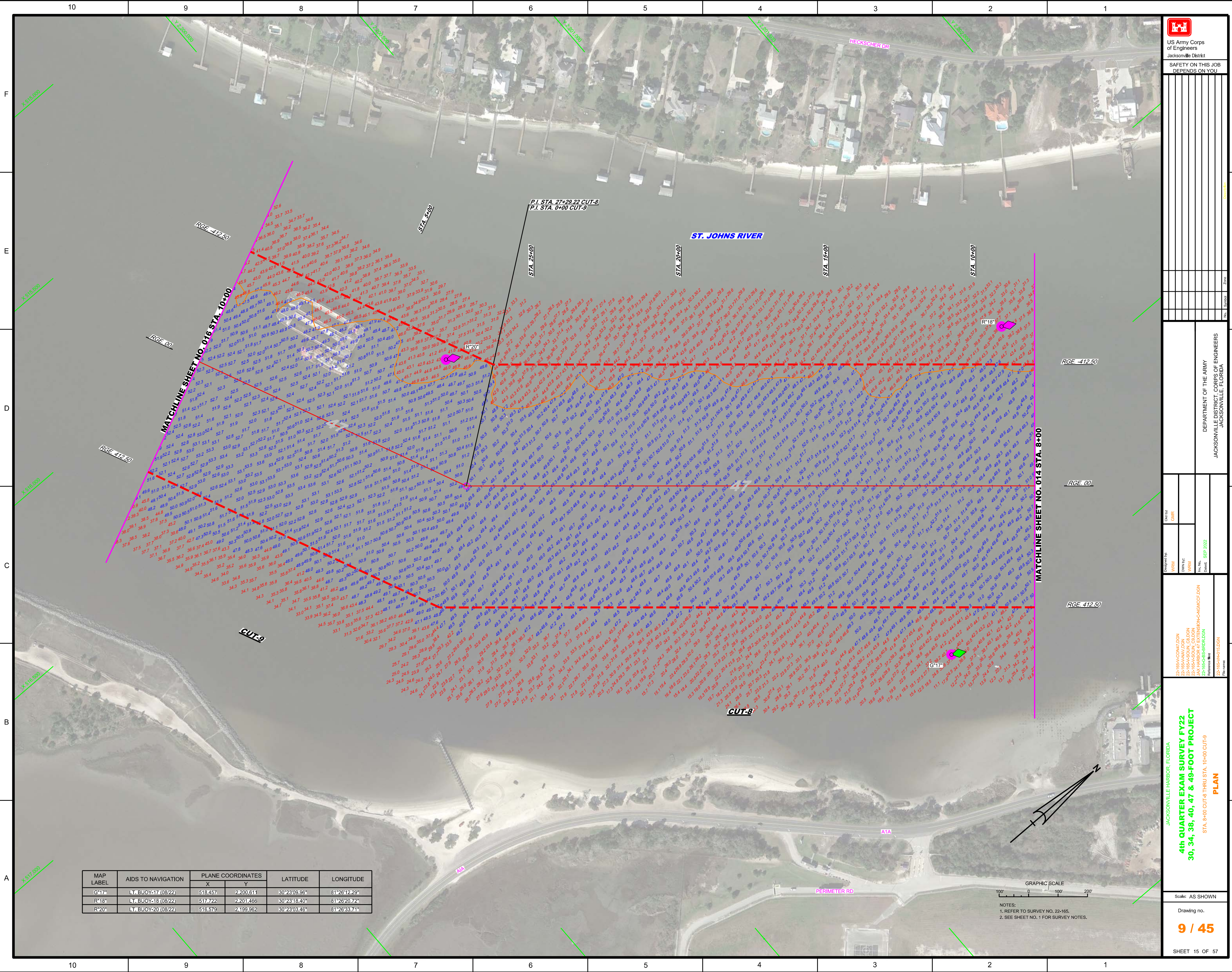
4th QUARTER EXAM SURVEY FY22
30, 34, 38, 40, 47 & 49-FOOT PROJECT

STA. 3+00 CUT-7 THRU STA. 8+00 CUT-8
PLAN

Scale: AS SHOWN

Drawing no.
8 / 45

SHEET 14 OF 57



MAP LABEL	AIDS TO NAVIGATION	PLANE COORDINATES		LATITUDE	LONGITUDE
		X	Y		
G*17*	LT. BUOY-17 (08/22)	518.457	2,200.611	30°23'09.96"	81°26'12.29"
R*18*	LT. BUOY-18 (08/22)	517.722	2,201.466	30°23'18.40"	81°26'20.72"
R*20*	LT. BUOY-20 (08/22)	516.579	2,199.962	30°23'03.46"	81°26'33.74"



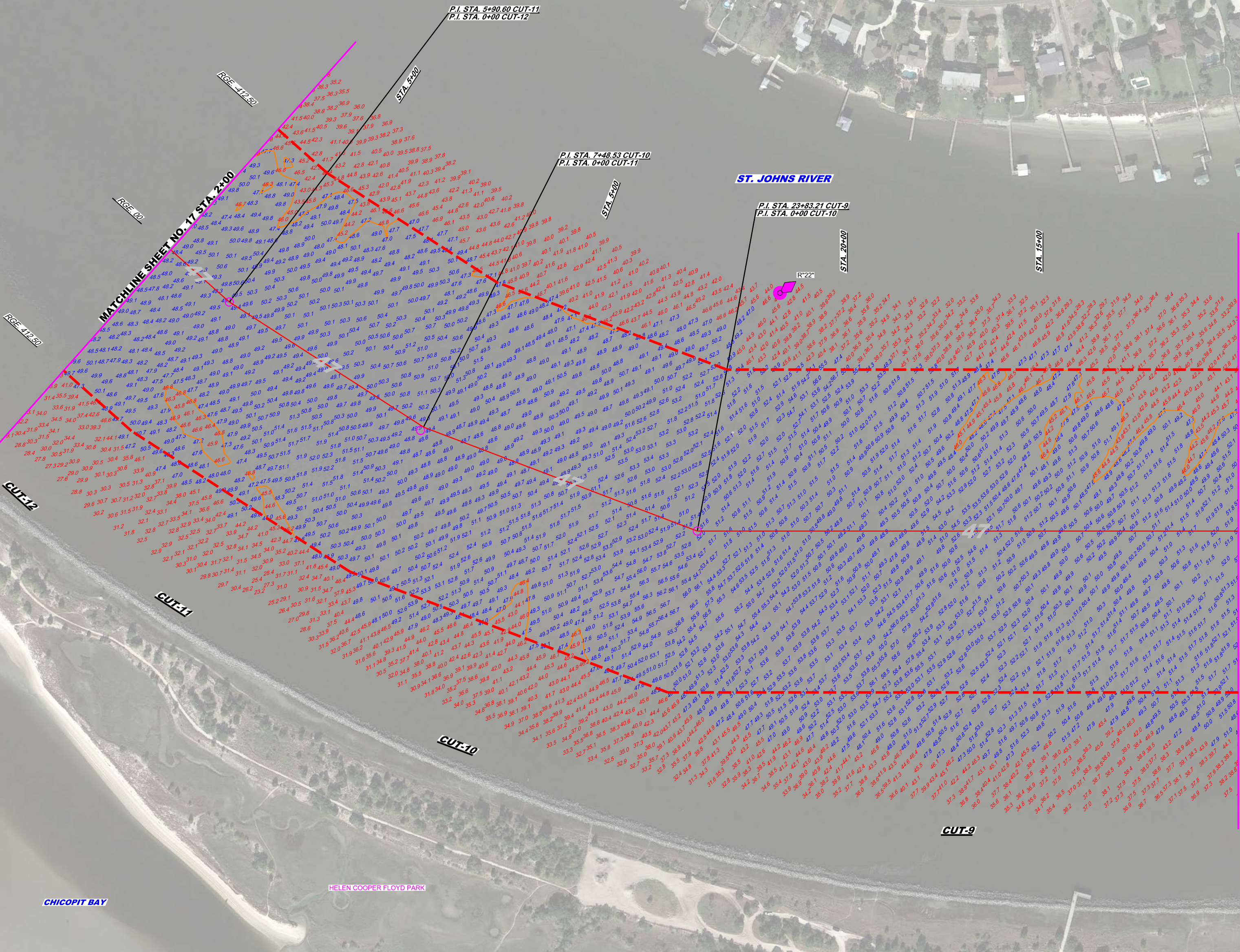
NOTES:
1. REFER TO SURVEY NO. 22-165.
2. SEE SHEET NO. 1 FOR SURVEY NOTES.

MAP LABEL	AIDS TO NAVIGATION	PLANE COORDINATES		LATITUDE	LONGITUDE
		X	Y		
R'22	LT. BUOY 222 (08/22)	514,720	2,199,392	30°22'57.75"	81°26'54.90"



US Army Corps of Engineers
Jacksonville District

SAFETY ON THIS JOB
DEPENDS ON YOU



MATCHLINE SHEET NO. 15 STA. 10+00

MATCHLINE SHEET NO. 17 STA. 2+00



NOTES:
1. REFER TO SURVEY NO. 22-165.
2. SEE SHEET NO. 1 FOR SURVEY NOTES.

DEPARTMENT OF THE ARMY
JACKSONVILLE DISTRICT, CORPS OF ENGINEERS
JACKSONVILLE, FLORIDA

22-165A-COIN47.DGN
22-165A-HAYV.DGN
22-165A-SOIN.C10.DGN
22-165A-SOIN.C11.DGN
JAX HARBOR 47 EXTENSION-CAIGVCC.DGN
22-165A-BS-BRD.DGN

JACKSONVILLE HARBOR, FLORIDA
**4th QUARTER EXAM SURVEY FY22
30, 34, 38, 40, 47 & 49-FOOT PROJECT**
STA. 10+00 CUT-9 THRU STA. 2+00 CUT-12
PLAN

Scale: AS SHOWN

Drawing no.
10 / 45

SHEET 16 OF 57